

FACTS

Quality

320 URBAN DESIGN

Applications



	100 % PAN	DIN 60 001		L 1/1	DIN ISO 9354
	120 cm			290 g/m ²	DIN EN 12127
	145 daN/5 cm	DIN EN ISO 13934-1		100 daN/5 cm	DIN EN ISO 13934-1
	Note: 100	EN 24 920		● min. 7/8 ● min. 4-5/5	DIN EN ISO 105-B04
	370 mm	EN 20 811		Declaration of conformity	EN 13561
	min. 7/8	DIN EN ISO 105-B02			

Lighting technical parameters DIN EN 14501

	T _v %	T _s %	R _s %	A _s %	g _{tot} *	
320 923	6,0%	13,8%	45,1%	41,1%	0,11	3
320 925	0,5%	2,7%	20,7%	76,6%	0,04	4
320 930	11,6%	18,1%	52,7%	29,2%	0,14	3
320 931	1,7%	3,8%	23,8%	72,5%	0,05	4
320 937	2,9%	3,8%	24,0%	72,3%	0,05	4

*EN: Vertical use: g_{tot} calculation according to DIN EN 13 363-2 double glazed with heat protection U = 1.2 | g = 0.59 (reference glass C according to DIN EN 14501 for outdoor use)

T_v = Light transmission
T_s = Solar transmittance
R_s = Solar reflectance
A_s = Solar absorptance

Summer warming protection
0 = very low to 4 = very high

LEGENDE

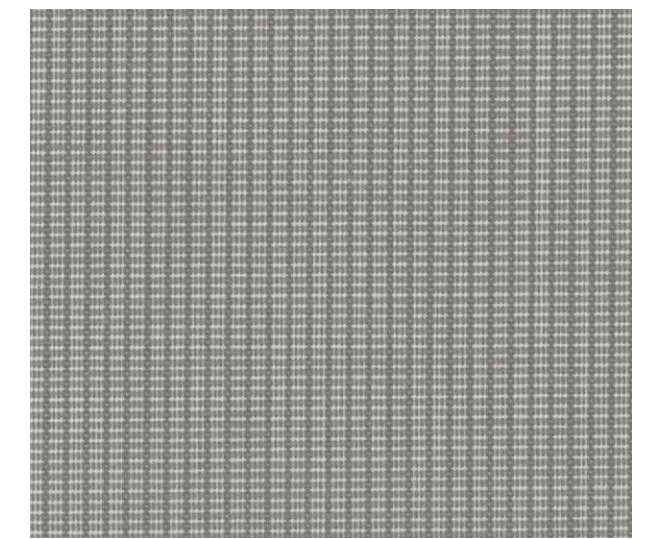
	Retractable awning		Parasol		Vario-valance		Basket awning
	Senkrechtmarkise		Sun sail		Pergola & conservatory Awnings		
	Base fabric		Width		Weave		Total weight
	Tensile strength warp		Tensile strength weft		Water repellency		Weather fastness
	Water column		Light fastness				

© 2018 Sattler SUN-TEX GmbH | Surequare Urban Design_EN | Version 1.0 | 12.2017

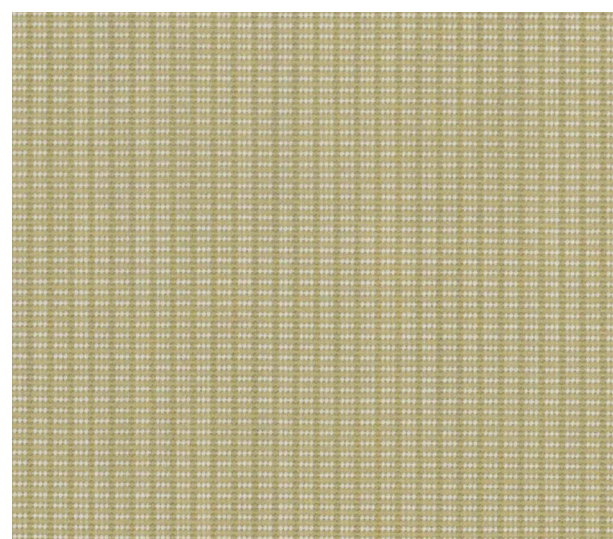
ELEMENTS URBAN DESIGN



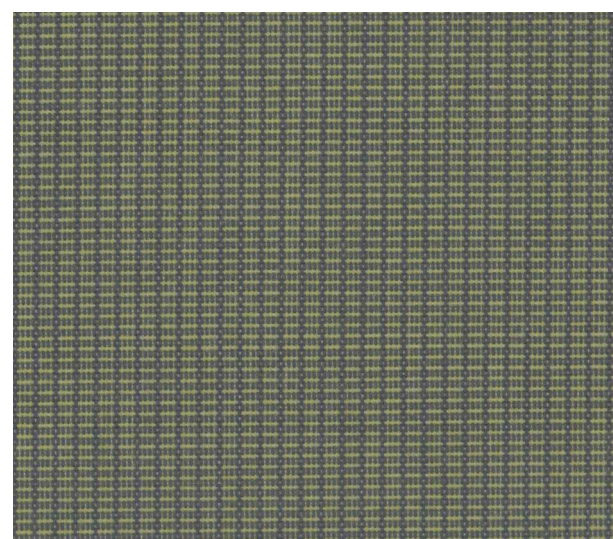
ELEMENTS
URBAN DESIGN



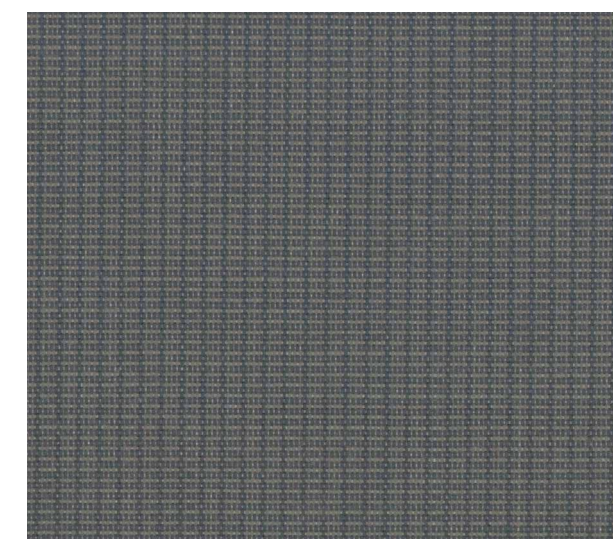
320 923 UV 80 | 0,3 cm



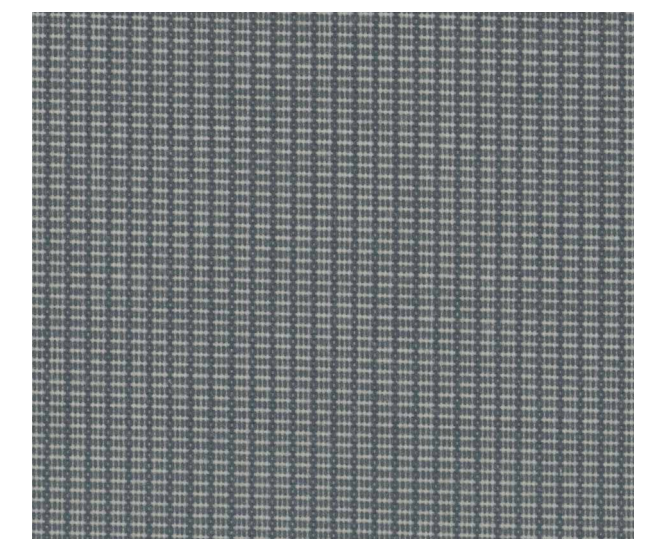
320 930 UV 60 | 0,3 cm



320 931 UV 60 | 0,3 cm



320 925 UV 80 | 0,3 cm



320 937 UV 80 | 0,3 cm

Special Features

Environment & Sustainability: certified according to ISO 14001 & OEKO-TEX®

Oil and dirt repellency

Repeat